

CivEX Community Conversation: *Reimagining Child Care in Arizona*



ARIZONA CENTER FOR
CIVIC LEADERSHIP

CIVEX



DEPARTMENT OF ECONOMIC SECURITY

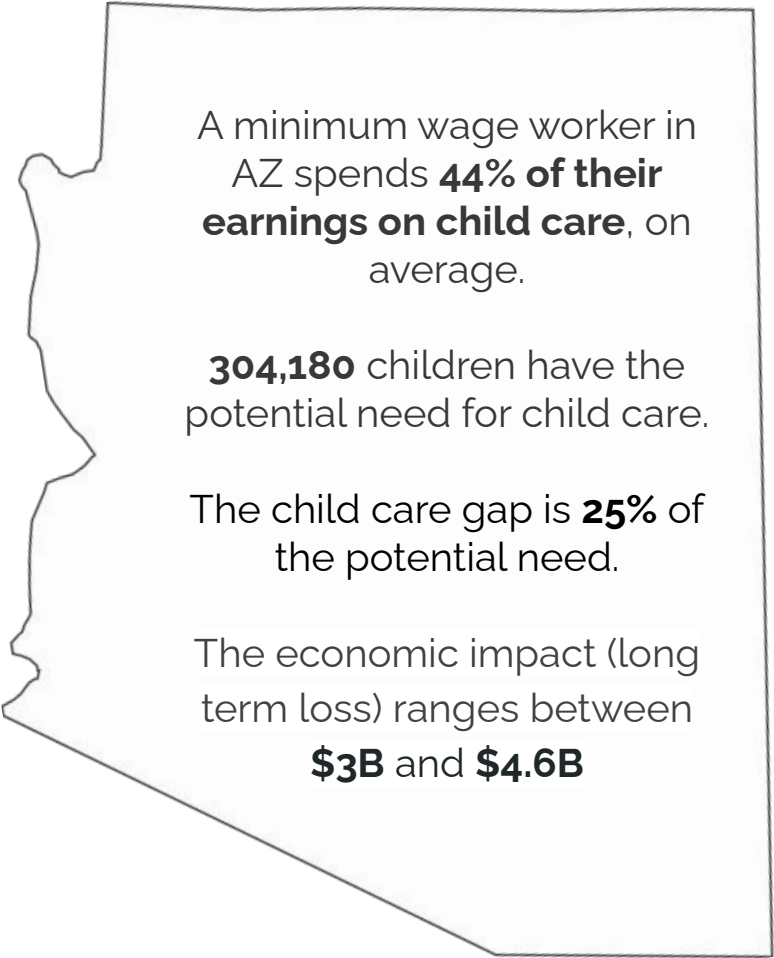
Your Partner For A Stronger Arizona

The Roots of a Healthy Community



For Children, Families & All of Us

Child Care - Critical Infrastructure



A minimum wage worker in AZ spends **44% of their earnings on child care**, on average.

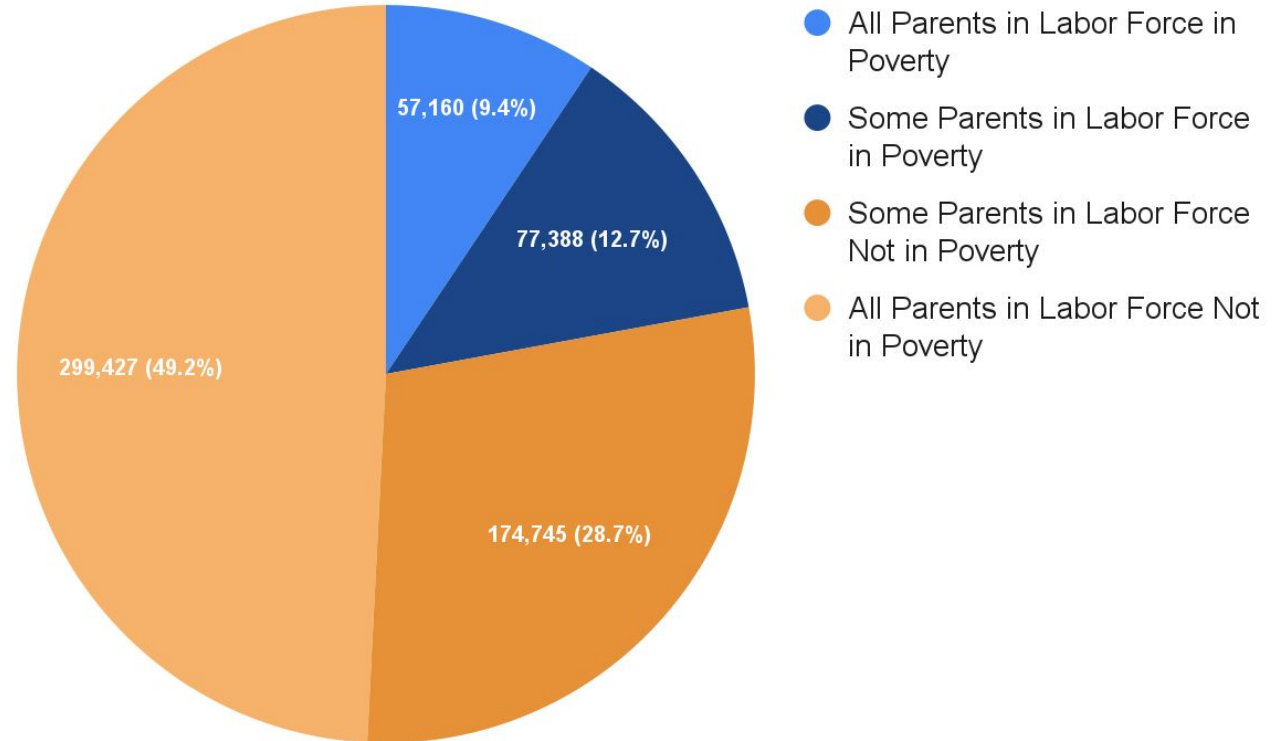
304,180 children have the potential need for child care.

The child care gap is **25%** of the potential need.

The economic impact (long term loss) ranges between **\$3B and \$4.6B**

Children Birth-Five by Parent Labor Force Participation

There are **608,720 Arizona families** in the labor force.





Child Care Options

There are many factors to consider when choosing a safe, healthy environment for children to learn and thrive



Care in Your Home



Family, Friend or Neighbor Care



Family Child Care Home



Child Care Centers



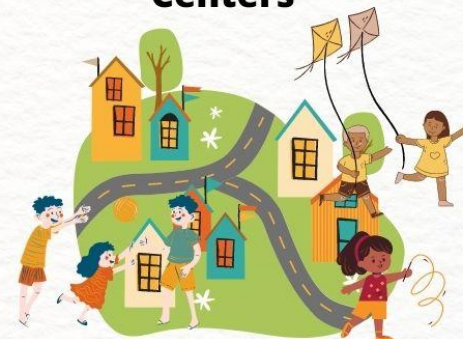
**HEAD START
EARLY HEAD START**



Preschool Programs



School-Age Child Care



Vacation and Summer Child Care Programs

Child Care Gap by County

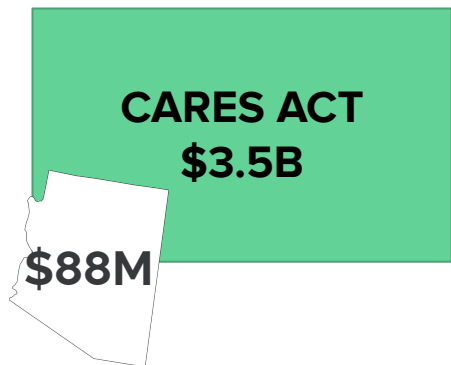
County	Child Care Gap	Gap Percentage
Maricopa County	37,620	19.1%
Pima County	10,350	23.7%
Pinal County	8,450	47.9%
Yuma County	3,540	37.3%
Mohave County	3,060	45.8%
Coconino County	2,450	41.0%
Navajo County	3,420	55.5%
Cochise County	1,710	37.1%
Yavapai County	1,680	28.2%
Gila County	1,420	62.2%
Santa Cruz County	1,280	60.3%
Graham County	1,200	72.0%
Apache County	1,160	51.4%
La Paz County	380	64.2%
Greenlee County	38	12.2%

Source: childcaregap.org - 2019

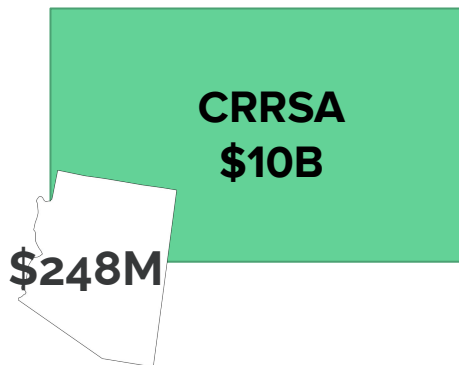
Living History: Federal Investment in Child Care

Since the onset of COVID-19, Congress has sought to stabilize the child care industry with an influx of emergency Child Care and Development (CCDF) funding, including:

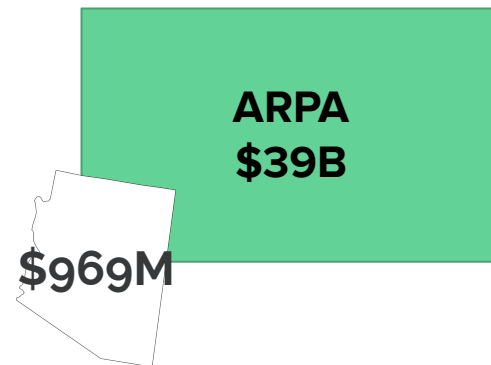
March 2020



Dec 2020



March 2021



Monica Brinkerhoff, M.S.W.,
Associate Vice President,
Early Childhood Education



United Way of Tucson
and Southern Arizona

United for an educated, thriving and equitable community.

Funding Sources Currently Supporting Children in High Quality Preschool in Pima County

Head Start

Provides funding for very low-income families (at or below 100% FPL), does not include tribal Head Start. Federal Program

First Things First Quality

First Scholarships

Provides funding for low-income families (at or below 200% FPL). State Program

Pima Early Education Program Scholarships

Provides funding for low-income families (at or below 200% FPL). County Program.

Arizona Department of Economic Security Child-Care Subsidies

Provides funding for low-income working families (at or below 165% FPL). State Program

4,440

Estimated number of eligible 3, 4, & 5 year olds enrolled in high-quality preschools, funded at least in part by a variety of federal, state, and local dollars.

Filling the Gap

Systems-level approach to filling the high-quality preschool gap

5,574

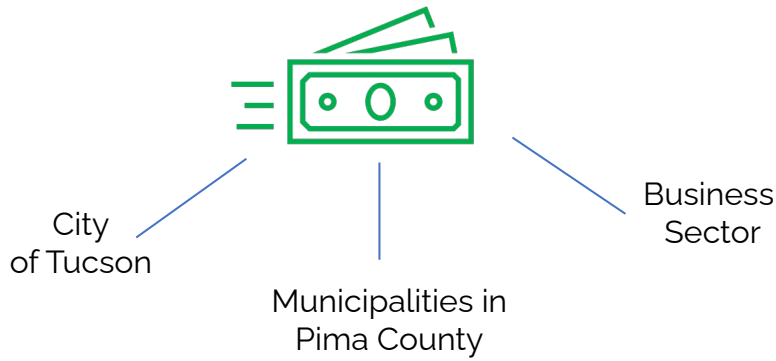
Estimated number of eligible children who still need access to HQ Preschool (using 60% uptake rate of those unserved as of June 2021 baseline, i.e. families may choose not to send their children to preschool, based on experience of other communities with locally funded PreK).

3,660

Baseline, June 2021

Pima County PEEPS Program

A unique,
community
level solution



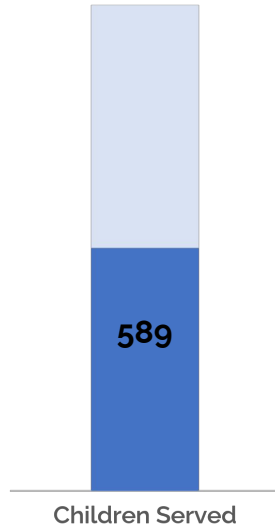
**\$10 million per year,
multi-year investment
by Pima County**

- Expanding and utilizing existing systems
- Reaching all types of child care settings
- Intentional focus on high-quality child care
- Funding nearly 1,200 new spaces for children
- Available to families at or below 200% of the Federal Poverty Level

Program success is driven by collaboration and a shared vision within the Early Childhood Education community.



Program Outcomes:



51% of children projected to be served by the program have been able to access PEEPS Scholarships as of January.

Innovation: Accelerate Quality:

- United Way of Tucson and Southern Arizona: partnering with child care providers to increase seats available within high-quality child care opportunities.
- Mechanism to provide more funding to child care providers and close the child care gap in Southern Arizona.

Things to Consider:

- Who are the local stakeholders? How will they be impacted? Are all the voices heard/at the table?
- What are the gap between the current reality and your goals?
- What are the resources needed?
- How will you track success and challenges?
- How will you be mindful of unintended consequences?
- Intentional outreach to communities in need or those impacted by the program.




Early Childhood Business Management Program Theory of Change

STRATEGIES	TARGETS	OUTCOMES
<ul style="list-style-type: none"> • Shared Services Hubs • Cohort-based business and leadership coaching and training • Automation onboarding • Individual business consulting • QuickBooks training for FCCs • DES invoicing training • DES automation advisory committee • Automated invoicing to DES • AZ Toolkit • Improving state data systems 	<ul style="list-style-type: none"> • Decrease time spent on administration • Improve accuracy of provider DES invoicing • Improve provider cash flow • Increase consistent messaging to providers around importance of automation and business practices • Strengthen business practices • Increase use of technology • Decrease staff vacancies within child care settings • Increase enrollment • Decrease bad debt • Increase access to technology • Increase Hub participation • Improve quality of ECE programs 	<ul style="list-style-type: none"> • Increase income • Increase automation • Increase access to data • Decrease staff turnover • Increase data driven decision making • Increase access to quality child care for Arizona working families

Let's Talk!





If we want a garden
We're gonna have to
sow the seed
Plant a little happiness
Let the roots run deep
- *The Highwomen*

Thank You!